



Material: Acero inoxidable, 304

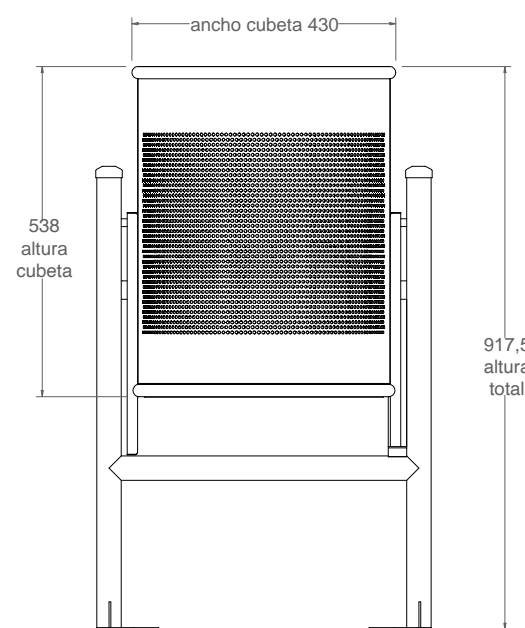
Peso: 25,3 kg

Acabado: Pintado epoxi al horno

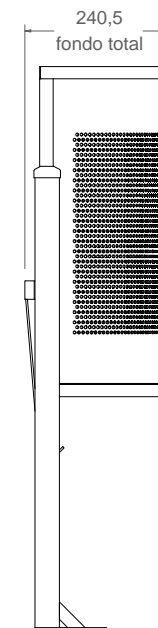
Embalaje: Caja de carton

Anclajes: Tornillo y tacos M8x80
(No suministrados)

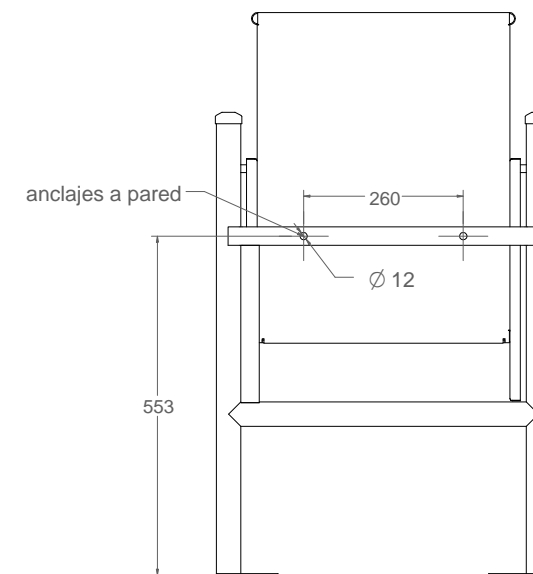
Capacidad: 35.32 L



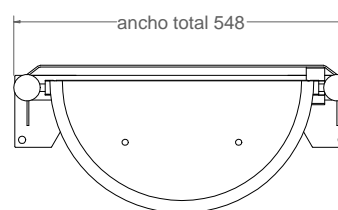
vista alzado
1:10



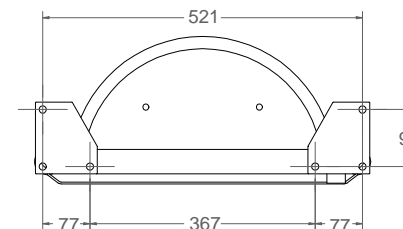
vista lateral
1:10



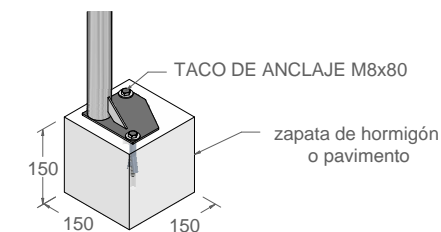
vista posterior
1:10



vista en planta
1:10



distancia anclajes
1:10



detalle anclaje
1:10

+ PRODUCTOS HAZ CLICK

